

RYOBI®

RY36C17A

ORIGINAL INSTRUCTIONS

36 Volt Lithium-ion Battery Charger



Important!

The product is not intended to be used or cleaned by persons with reduced physical, sensory, or mental capabilities, or lack of experience or knowledge, unless they have been given instructions concerning the safe use of the product by a person legally responsible for their safety. They should be supervised while using the product. Children shall not use, clean, or play with the product, which when not in use, should be secured out of their reach.

Fig.1

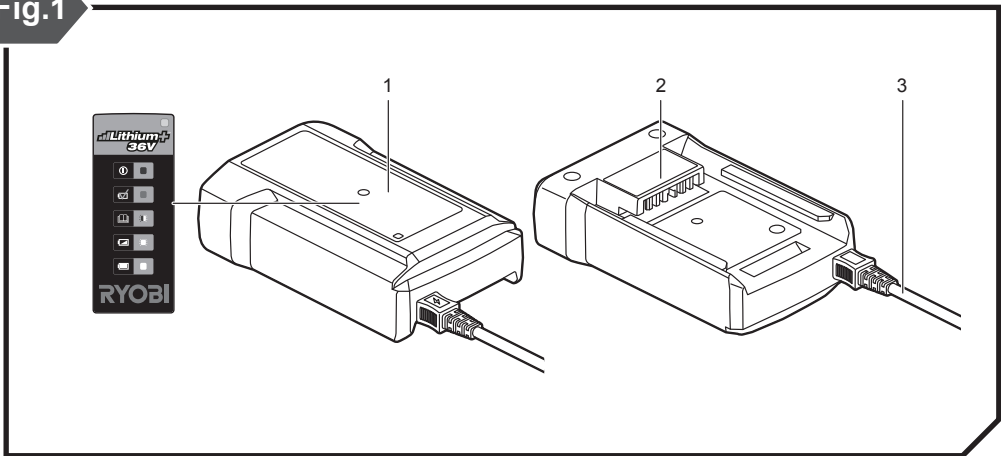


Fig.2

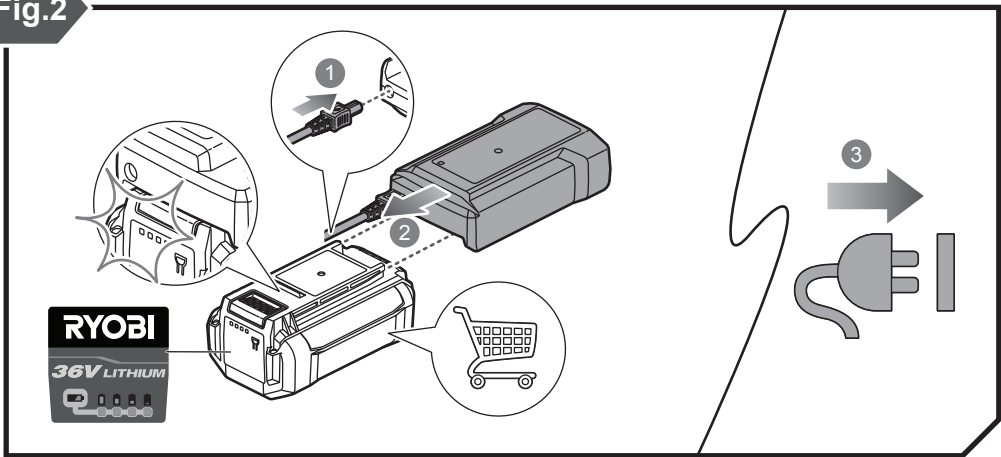
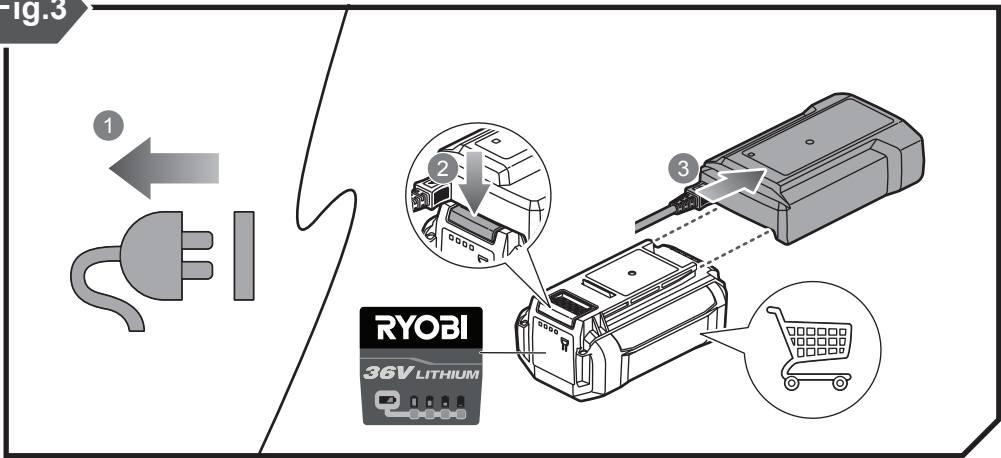


Fig.3



Safety, performance, and dependability have been given top priority in the design of your battery charger.

INTENDED USE

This charger is intended to charge only BPL3615, BPL3620D, BPL3626D, BPL3626D2, BPL3640D, BPL3640D2, BPL3650D, and BPL3650D2 battery packs listed in this manual.

The product is only for indoor use, in dry conditions.

The product is not intended to charge any other type of battery or be used as a power supply or any other purpose. It should never be used in explosive or inflammable environments.

Do not use the product for any other purpose.

CHARGER SAFETY WARNINGS

WARNING

Read all safety warnings and all instructions. Failure to follow the warnings and instructions may result in electric shock, fire, and/or serious injury.

WARNING

Do not recharge primary cells (non-rechargeable).

WARNING

Mains voltage must correspond with the voltage specifications on the product.

- Before using the product, check that the charger enclosure, cable, and plug are not damaged. If damage is found, do not use the product and bring it to an authorised service centre for repair.
- The product must not be damp and should never be used in a damp environment.
- The product is for indoor use only.
- Do not use the product if it has suffered any heavy shock or jolting, or if it is damaged in any other way.
- When charging, do not expose the product to sunlight or other heat source. The recommended temperature range at charging vicinity is 10° to 25°C.
- Due to the heat generated during charging, do not use the product on a combustible surface.
- Do not use the product near flammable materials, such as cloth, packaging materials, paint, spray paint or aerosols, lubricants, thinners, petrol containers, gas containers, or gas appliances.
- Do not cover any ventilation slots, and provide adequate ventilation during operation.
- Never modify, disassemble, or attempt to repair the product yourself.
- Do not allow the charger or battery packs to become contaminated with any material that could be

conductive, such as metallic particles from grinding, cutting, or machining processes.

- Unplug the product from the power socket when it is not in use or when cleaning it.
- Use only an extension cable that is approved and in good condition.
- Do not charge battery packs that show signs of leaks. Dispose of them properly.
- Never charge a damaged battery pack. Replace damaged battery packs immediately.
- If the supply cord is damaged, it must be replaced by a special cord or assembly available from the manufacturer or its service agent.
- Before every use, examine the supply cord for damage. If there are signs of damage, it must be replaced by a qualified person at an authorised service centre to avoid a hazard.

ADDITIONAL BATTERY SAFETY WARNINGS

WARNING

To reduce the risk of fire, personal injury, and product damage due to a short circuit, never immerse your tool, battery pack or charger in fluid or allow a fluid to flow inside them. Corrosive or conductive fluids, such as seawater, certain industrial chemicals, and bleach or bleach-containing products, etc., can cause a short circuit.

ENVIRONMENTAL PROTECTION



Recycle raw materials instead of disposing of as waste. The machine, accessories and packaging should be stored for environmentally friendly recycling.

OPERATION

CHARGING THE BATTERY PACK

Battery packs are shipped in a low charge condition. Therefore, you should charge them before first use. If the charger does not charge the battery pack under normal circumstances, bring both the battery pack and charger to an authorised service centre.

Make sure that the power supply is normal household voltage, 220–240V, 50/60Hz, AC only.

Make sure that the battery pack latch clicks into place and that the battery pack is secured in the charger before charging.

NOTE: When the battery becomes fully charged, the green LED remains on for 10 minutes and then turns off. It is normal for the battery pack to become slightly warm to touch while charging.

Do not place the charger and battery pack in an area of extreme heat or cold. They work best at normal room temperature.

NOTE: When charging, the charger and battery pack should be placed in a location where the temperature is more than 10°C but less than 25°C.

CHARGING A COOL BATTERY PACK

See Fig. 2

1. Connect the power cord to the product.
2. Align the raised rib on the battery pack with the groove in the product, and slide in the battery pack.

Make sure that the battery pack latch clicks into place.

3. Connect the product to a power supply.

See Fig. 3

4. Disconnect the product from the power supply when the battery pack becomes fully charged.
5. Press the battery pack latch to unlock the battery pack from the product.
6. Slide the battery pack off the product.

CHARGING A HOT BATTERY PACK

When using a tool continuously, the cells in the battery pack becomes hot. A hot battery pack should be cooled down for approximately 30 minutes before recharging.

MAINTENANCE

- When not using or when cleaning the product, disconnect it from the power supply and remove the battery pack.
- Avoid using solvents when cleaning plastic parts. Most plastics are susceptible to various types of commercial solvents. Use clean cloth or soft brush to remove dirt and dust.
- Do not, at any time, let brake fluids, gasoline, petroleum-based products, and penetrating oils come in contact with plastic parts. These products contain chemicals that can damage, weaken, or destroy plastic.

WARNING

Hazardous voltages are present within the product; do not disassemble.

- The supply cord cannot be replaced. If the cord is damaged, the product should be scrapped.

CLEANING THE CHARGER

WARNING

Unplug the charger power cord from power supply before cleaning at any time to prevent serious personal injury.

- Clean the charger surface (except labels) using a damp cloth with a mild detergent.

- Do not use any strong detergents on the plastic housing. They can be damaged by certain aromatic oil such as pine and lemon, and by solvents such as kerosene.
- Moisture can cause a shock hazard. Wipe off any moisture with a soft dry cloth.

STORAGE

Store your charger in a cool dry place between 10°C. and 38°C.

KNOW YOUR PRODUCT

See Fig. 1

1. RY36C17A Charger
2. Battery port
3. Power cord

SYMBOLS ON THE PRODUCT

Some of the following symbols may be used on this product. Please study them and learn their meaning. Proper interpretation of these symbols will allow you to operate the product better and safer.



Precautions that involve your safety.



To reduce the risk of injury, user must read and understand user's manual before using this product.



Class II: Protection against electric shock rely on double insulation or reinforced insulation.



Time-lag type fuse



Indoor use only



Waste electrical products should not be disposed of with household waste. Please recycle where facilities exist. Check with your Local Authority or retailer for recycling advice.



CE conformity

The following signal words and meanings are intended to explain the levels of risk associated with this product.



DANGER

Indicates an imminently hazardous situation, which, if not avoided, will result in death or serious injury.



WARNING

Indicates a potentially hazardous situation, which, if not avoided, could result in death or serious injury.




CAUTION

Indicates a potentially hazardous situation, which, if not avoided, may result in minor or moderate injury.

CAUTION

(Without Safety Alert Symbol) Indicates a situation that may result in property damage.

SPECIFICATIONS					
Battery pack	BPL3615	BPL3620D	BPL3626D BPL3626D2	BPL3640D BPL3640D2	BPL3650D BPL3650D2
Type	Lithium-ion				
Voltage	36 V DC				
Charger input	220 V–240 V, 50/60 Hz AC only				
Battery pack capacity	1.5 Ah	2.0 Ah	2.6 Ah	4.0 Ah	5.0 Ah
No. of cell for battery	10	10	20	20	20
Maximum charging time (RY36C17A)	60 min	80 min	105 min	160 min	200 min
Quick recharge					
	35 min	45 min	60 min	96 min	120 min

CHARGER LED FUNCTIONS

LED indicator	Battery pack	LED			Action	
		Red	Orange	Green		
	Power	Without battery pack	On		Ready to charge battery pack.	
	Evaluate	Hot battery pack		On	When battery pack reaches cooled temperature, charger begins fast charge mode.	
	Evaluate	Cold battery pack		On	When battery pack reaches warmed temperature, charger begins fast charge mode.	
	Evaluate	Deeply discharged			Flashing	Charger pre-charges battery until normal voltage is reached, then begins fast charge mode.
	Defective	Defective	Flashing		Flashing	Battery pack or charger could be defective.
	<ul style="list-style-type: none"> • If the LED status shows defective, try to reset the charger or replug the battery. • If the LED status repeats a second time, try charging a different battery. • If a different battery charges normally, dispose of the defective pack (see maintenance section). See warranty page if the battery is still within warranty. • If a different battery also indicates "defective," the charger may be defective. 					
	Charging	Fast charging			Flashing	—
	Full	—			On	Fast charging is complete; charger maintains charge mode.

BATTERY PACK LED INDICATION DESCRIPTIONS

					Status
	Off	Off	Off	Flashing	In charging process, battery pack capacity is lower than 25%
	Off	Off	Flashing	On	In charging process, battery pack capacity is between 25% and 50%.
	Off	Flashing	On	On	In charging process, battery pack capacity is between 50% and 75%.
	Flashing	On	On	On	In charging process, battery pack capacity is between 75% and 100%.
	On	On	On	On	Fully charged
	Off	Off	Off	Off	One minute after full charge, all LEDs on the battery are off, charger LED is on with green color.

RYOBI® WARRANTY APPLICATION CONDITIONS

In addition to any statutory rights resulting from the purchase, this product is covered by a warranty as stated below.

1. The warranty period is 24 months for consumers and commences on the date the product was purchased. This date has to be documented by an invoice or other proof of purchase. The product is designed and dedicated to consumer and private use only. So there is no warranty provided in case of professional or commercial use. This warranty applies only on new products.
2. There is a possibility to extend for a part of the range of power tools (AC/DC) the warranty period over the period described above using the registration on the www.ryobitools.eu website. The eligibility of products for extended warranty is clearly displayed in stores and / or on packaging and is contained within the product documentation. The end user is required to register his/her newly-acquired products online within 30 days from the date of purchase. The end user may register for the extended warranty in his/her country of residence if listed on the online registration form where this option is valid. Furthermore, end users must give their consent to the storage of their personal data that is required to be entered online. They must also accept the terms and conditions. The registration confirmation receipt, which is sent out by e-mail, and the original invoice showing the date of purchase will serve as proof of the extended warranty.
3. The warranty covers all defects of the product during the warranty period due to faults in workmanship or material at the purchase date. The warranty is limited to repair and/or replacement and does not include any other obligations including but not limited to incidental or consequential damages. The warranty is not valid if the product has been misused, used contrary to the instruction manual, or has been incorrectly connected to a power supply. This warranty does not apply to:
 - any damage to the product that is the result of improper or lack of maintenance
 - any product that has been altered or modified
 - any product where original identification (trade mark, serial number) markings have been defaced, altered or removed
 - any damage caused by non-observance of the instruction manual
 - any product not displaying the CE approval mark on the rating plate
 - any product that has been attempted to be repaired by a non-authorized warranty service centre or without prior authorisation by Techtronic Industries
 - any product connected to an improper power supply (amps, voltage, frequency)
 - any product used with inappropriate fuel mixture (fuel, oil, Ratio of oil / fuel mixture)
 - any damage caused by external influences (water, chemical, physical, shocks) or foreign substances
 - normal wear and tear spare parts
 - inappropriate use, overloading of the tool
 - use of non-approved accessories or parts
 - Accessories provided with the tool or purchased separately including but not limited to blades, saw chains, cutting lines etc.
 - Any periodic adjustments to or maintenance cleaning of carburetors
 - Components (parts and accessories) subject to natural wear and tear, including but not limited to bump knobs, drive belts, clutch, blades of hedge trimmers or lawn mowers, harness, cable throttle, carbon brushes, power cord, tines, felt washers, hitch pins, blower fans, blower and vacuum tubes, vacuum bag and straps, guide bars, saw chains, hoses, connector fittings, spray nozzles, wheels, spray wands, inner reels, outer spools, cutting lines, spark plugs, air filters, gas filters, mulching blades, etc.
4. For servicing, the product must be sent or presented to a RYOBI authorised service station listed for each country in the following list of service station addresses. In some countries your local RYOBI dealer undertakes to send the product to the RYOBI service organisation. When sending a product to a RYOBI service station, the product should be safely packed without any dangerous contents such as petrol, marked with sender's address and accompanied by a short description of the fault.
5. A repair / replacement under this warranty is free of charge. It does not constitute an extension or a new start of the warranty period. Exchanged parts or products become our property. In some countries delivery charges or postage will have to be paid by the sender. Your statutory rights arising from the purchase of the product remain unaffected.
6. This warranty is valid in the European Community, Switzerland, Iceland, Norway, Liechtenstein, Turkey and Russia. Outside these areas, please contact your authorised RYOBI dealer to determine if another warranty applies.

AUTHORISED SERVICE CENTRES

ACD PLANT LTD

145 Southbank Road
Coundon
Coventry, West Midlands
CV6 1FG
Phone: 02476 594348
Email: danmcgunigle@acdplant.co.uk
Web: www.acdplant.co.uk

CBS Power Tools Limited

Unit 4, V P Square
Storeys Bar Rd, Fengate
Peterborough, Cambridgeshire
PE1 5YS
Phone: 01733 343031
Email: steve@cbspowertools.co.uk
Web: www.cbspowertools.com

C D Powertools

76 Old Road
Chunwell Morley, Leeds
LS27 7TH
Phone: 0113 2718494
Email: info@cdpowertools.co.uk
Web : www.cdpowertools.co.uk

C J Sinclair Limited

44 Victoria Road
St Peters
Broadstairs, Kent
CT10 2UG
Phone: 01843 869400
Email: repairs@cjsinclairltd.co.uk
Web: www.cjsinclairltd.co.uk

ToolTech Industrial Equipment

227 E Dunhill Road, Macosquin
Coleraine, Co Londonderry
BT514LQ
Phone: 028 70359493
Email: john@tootech.org.uk

For an updated list of authorised service centres, visit <http://uk.ryobitools.eu/header/service-and-support/service-agents>.



*RYOBI is a trademark of Ryobi Limited,
and is used under license.*

Techtronic Industries GmbH
Max-Eyth-Straße 10,
71364 Winnenden,
Germany

960324017-01