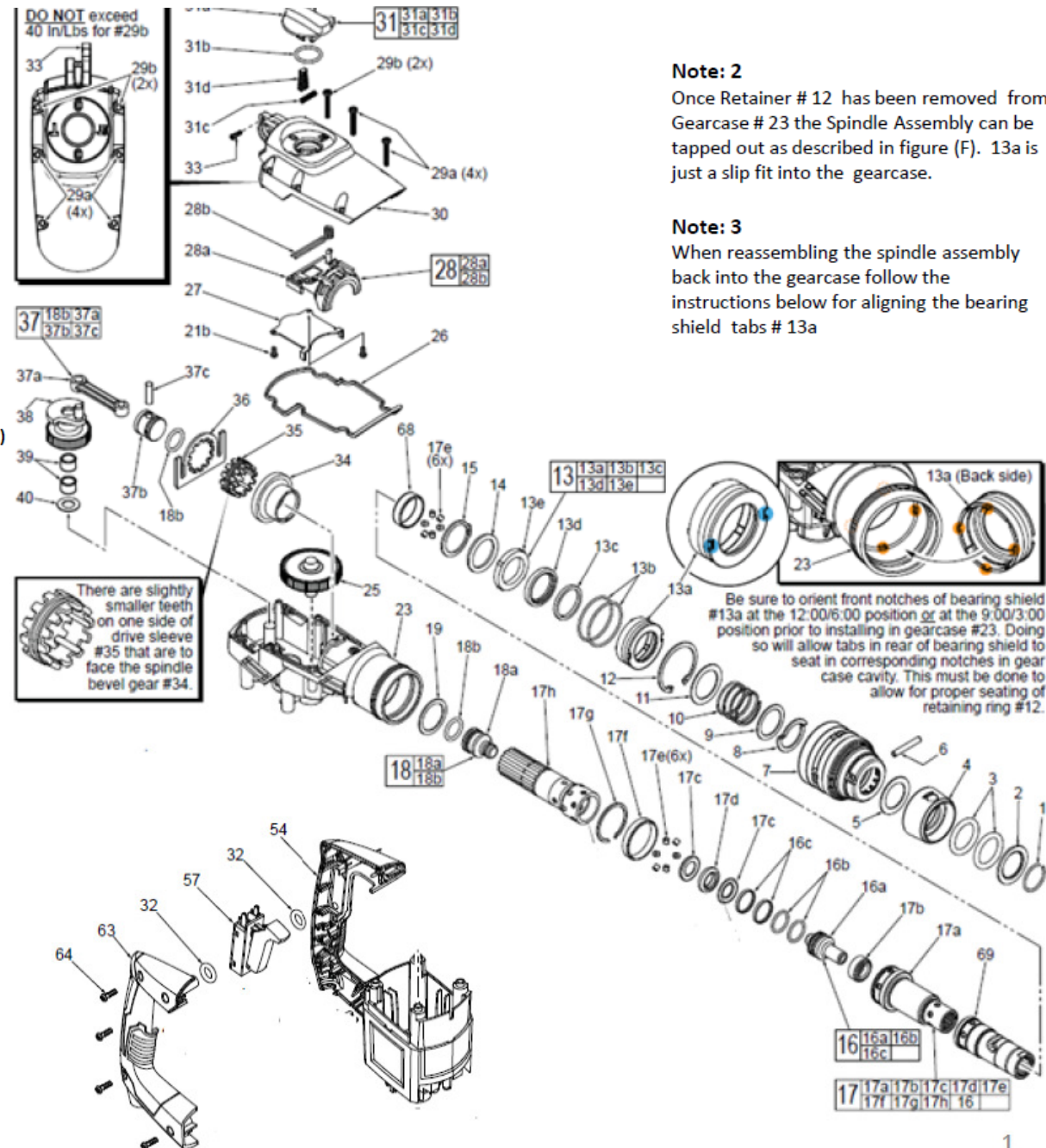


K540S / K500ST Spindle Sleeve Lubrication Instruction

- (A) Remove screws # 64 Lift off Handle # 63
- (B) Remove Ground Screw # 33
- (C) Remove six [6] top Gearcase Screws # 29a and # 29b (lift gearcase cover off and set aside)
- (D) Remove gasket # 26 (optional)
- (E) Remove # 1 thru #12
- (F) Place a small brass rod on the rear edge of barrel #17h and tap brass rod until the spindle / barrel assembly can be pulled from gearcase # 23 as an assembly.
- (G) Place plastic on bag on small scale and measure out 18gr. Grease Type Urethyn GE00, part no. 4931624375 (45gr tube) [Slide2]
- (H) Remove the Ram assembly # 18 from the barrel and remove O-Ring #18b (Slide 3) . lubricate the ram reinstall O-ring #18b. [Set assembly to the side]
- (I) Stand the Spindle assembly up as shown on [Slide 5 / 6] place the 18 gr. of type "Q" Into the barrel as shown on [Slide 4] Install Ram Assembly # 18 into Spindle Assembly as shown on (Slide 5 / 6).

Note: 1

Crank Assembly # 38, Piston Assembly # 37, Locking Plate # 36, Drive Sleeve # 35, Spindle Bevel Gear #34, And Clutch Assembly # 34 can all remain in Gearcase # 23. When reinstalling Spindle Assembly into gearcase just align the external splines on the outside of the barrel with the internal splines inside the Spindle Bevel Gear # 34 and align tabs on bearing shield # 13a.

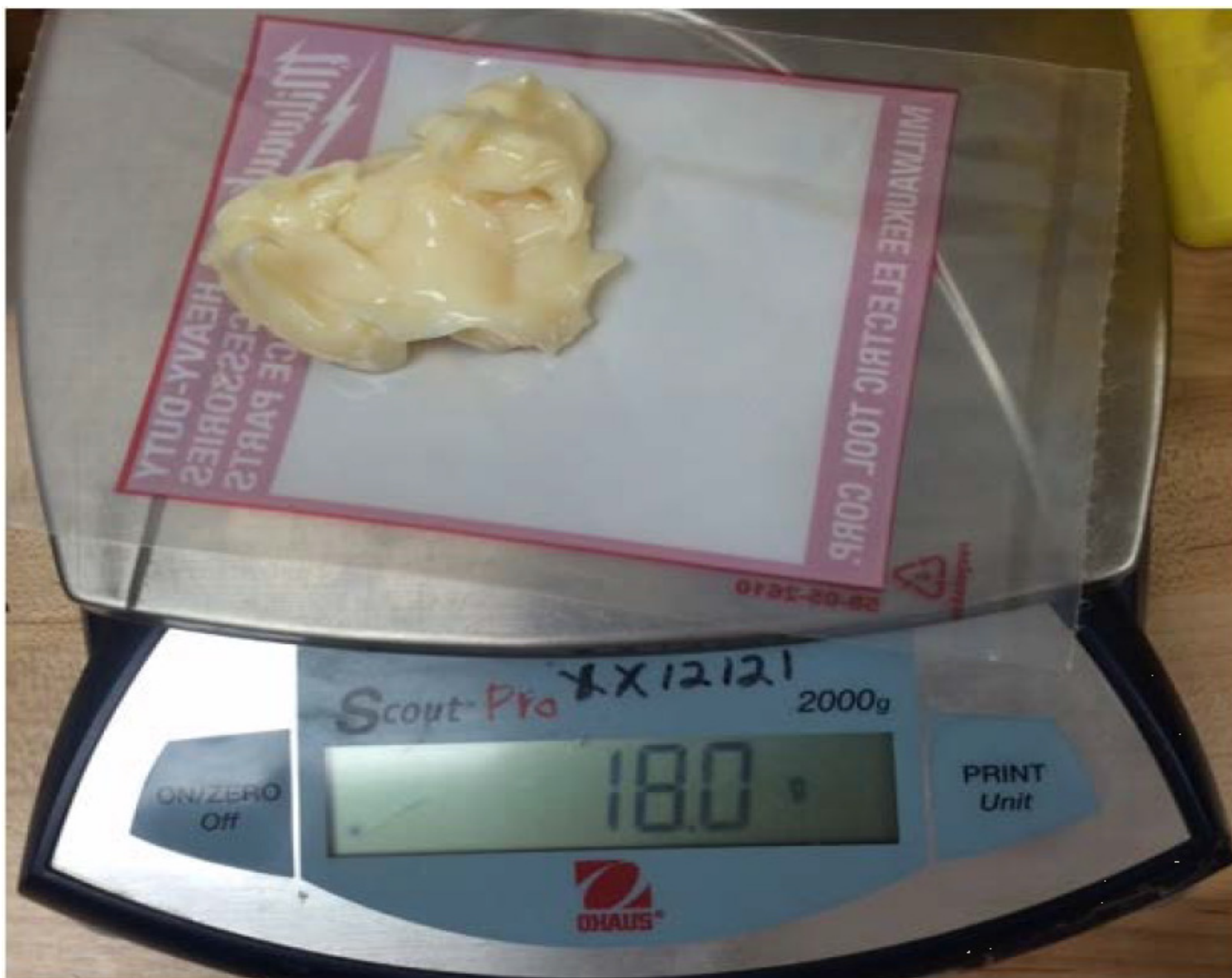


Note: 2

Once Retainer # 12 has been removed from Gearcase # 23 the Spindle Assembly can be tapped out as described in figure (F). 13a is just a slip fit into the gearcase.

Note: 3

When reassembling the spindle assembly back into the gearcase follow the instructions below for aligning the bearing shield tabs # 13a



18 Grams of Type "Urethyn GE00" Grease 4931624375

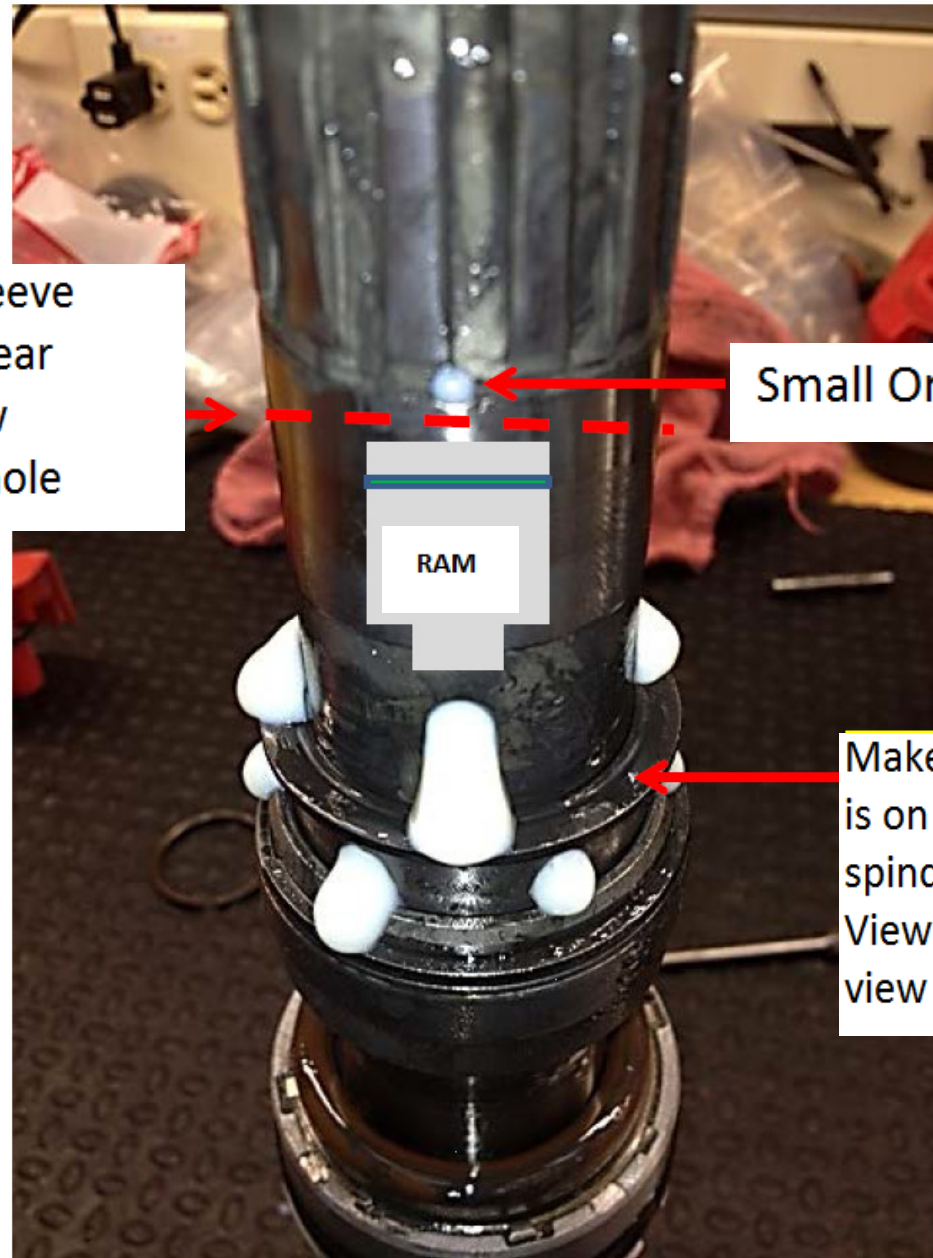


Lubrication for Ram with Grease "Urethyn GE00"

18 grams of Urethyn GE00,Grease
4931624375
inside spindle-sleeve

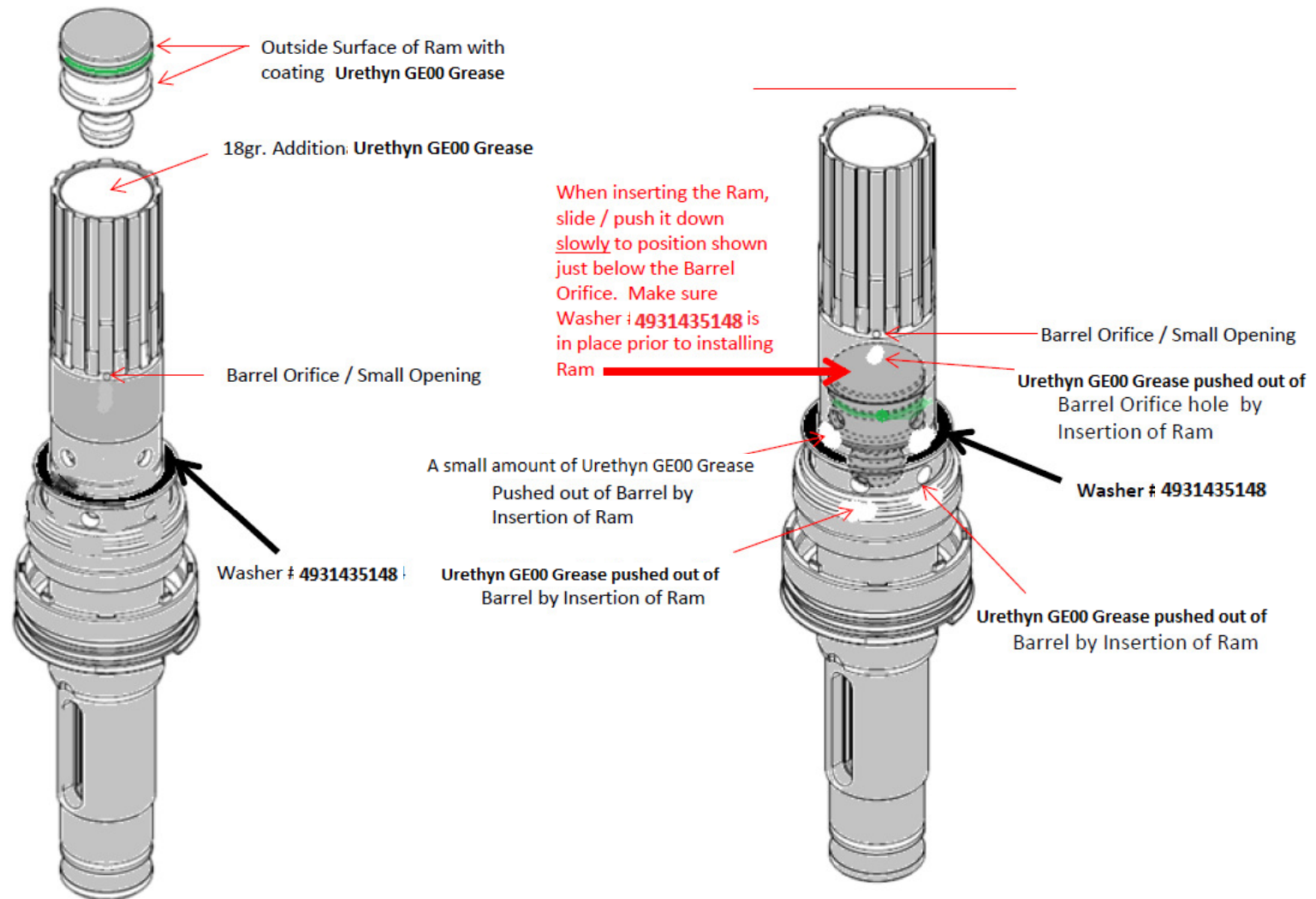


Push Ram into Sleeve
slowly until the Rear
Face is just below
the small orifice hole



Small Orifice

Make sure Washer Pos.1219
is on the backside of the
spindle sleeve as shown
View page 6 for a full
view of the spindle.



The Spindle Sleeve shown is a K540 S SDS - Max
 Lubrication specifications for both K540S & K500ST Rotary / Chisel Hammer Spindle Assemblies